

# *PREGUNTAS DIFÍCILES Y CONFUSAS*

- El examen es de 50 preguntas de opción múltiple: una pregunta y 4 posibles respuestas (A, B, C o D).
- 30 preguntas son fáciles, 10 preguntas son difíciles y 10 preguntas son confusas.
- Cuando inicia el examen, si una pregunta es difícil o confusa: dar un click en el botón NEXT o SALTAR, la pregunta aparecerá de nuevo al final.
- En las preguntas difíciles o confusas, cambie su técnica y primero seleccione las 2 respuestas claramente erróneas, le será más fácil luego identificar la respuesta correcta.



# *PREGUNTAS DIFICILES Y CONFUSAS*

**2.** If you get angry or upset before driving, you should

A



calm down before you drive

B



not think about what made you angry as you drive

C



concentrate and be cautious as you drive

D

breathe deeply as you drive to regain your self-control

# *PREGUNTAS DIFICILES Y CONFUSAS*



**3.** The driver of Car A should

A



slow down before entering the freeway

B



move into the far left lane as soon as possible

C



enter freeway at the speed of traffic flow

D

drive faster than traffic flow to better maneuver

# *PREGUNTAS DIFICILES Y CONFUSAS*



4. This sign means

A



crosswalk ahead

B



road narrows ahead

C

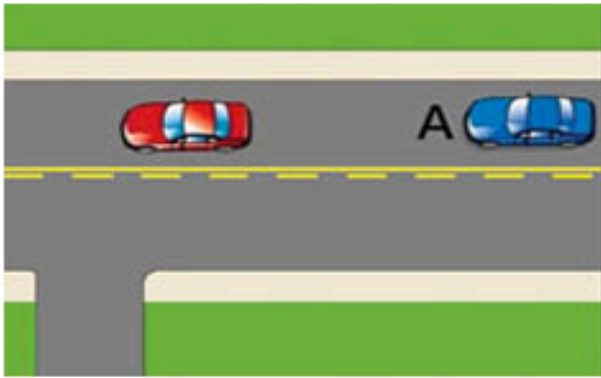


obstruction - keep right or left

D

straight through only

# *PREGUNTAS DIFICILES Y CONFUSAS*



5. Car A

A



may not pass

B



may pass on the right

C



may not turn left over the line

D

may pass with caution

# *PREGUNTAS DIFICILES Y CONFUSAS*

6. You are on a narrow road and want to pass a cyclist, you should

A

pass the cyclist only if they are riding in a designated bicycle lane. Otherwise, you are not permitted to pass cyclists.

B



pass them as it is a cyclist's responsibility to yield to vehicles.

C



wait for a clear, straight stretch that will allow you to pull out and give the cyclist plenty of room as you pass.

D



honk your horn to let them know you want to pass.

# *PREGUNTAS DIFICILES Y CONFUSAS*



8. This sign means:

A



Yield to traffic in intersection.

B



No turns permitted at this intersection.

C



One-way traffic only.

D

No lane changes allowed.

# *PREGUNTAS DIFICILES Y CONFUSAS*



9. This sign means:

A



do not pass cyclists

B

bicycles prohibited

C



bicycle lane ahead

D



cyclists may be on roadway



# *PREGUNTAS DIFICILES Y CONFUSAS*

**11.** What is the correct response if your car starts to skid?

A

shift into neutral and do not turn the steering wheel until skidding has stopped.

B



steer away from the direction of the skid.

C



brake hard to stop the vehicle as soon as possible,

D



ease off the accelerator and steer in the direction you want to go.

# *PREGUNTAS DIFICILES Y CONFUSAS*

**12.** Before making a left turn, a driver should



signal any drivers behind to pass



yield to oncoming traffic and wait for a safe gap

C

wait for oncoming drivers to wave you through



make sure there are no cars behind

# *PREGUNTAS DIFICILES Y CONFUSAS*



- 14.** The traffic signal has just turned yellow. There are no other vehicles around. Vehicle A should

A



slow down and stop since it is safe to do so

B

scan the intersection, maintain speed, and go straight through

C



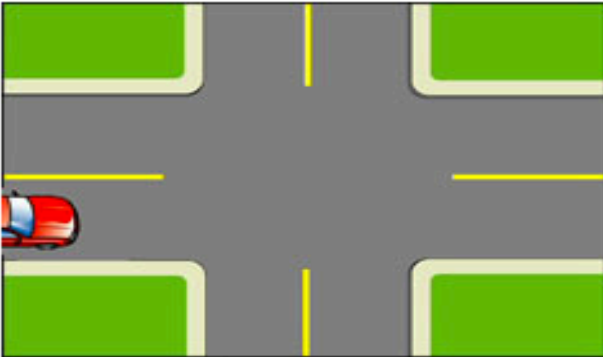
stop, and then proceed through the red light since there is no other traffic

D



speed up and make it through before it turns red

# *PREGUNTAS DIFICILES Y CONFUSAS*



**16.** Do you have to stop at intersections with no lights or stop signs (i.e. an uncontrolled intersection)?

A



no, but use your horn as approach the intersection.

B



no, but you should slow down and be prepared to yield to other road users

C



no. always maintain your speed

D

yes, you must always stop at these intersections

# *PREGUNTAS DIFICILES Y CONFUSAS*



**10.** If two vehicles arrive at a 4-way stop intersection at the same time and are facing each other

A



a vehicle that is turning may go first.

B



a vehicle that is going straight through may go first.

C



always wait for the other vehicle to move first.

D

it is always ok if both vehicles move at the same time.

# *PREGUNTAS DIFICILES Y CONFUSAS*

**20.** When exiting a highway you should slow down

A



before you signal your intention to turn off the highway.

B



only if there are vehicles behind you.

C



after you are in the exit lane.

D

before you are in the exit lane.

# *PREGUNTAS DIFICILES Y CONFUSAS*

**22.** Which of the following is NOT something you should do while merging on to a highway?

A



Signal your intention.

B



Stop and wait for a gap.

C

Adjust your speed if necessary using the acceleration lane.

D



Scan for a safe gap.

# PREGUNTAS DIFICILES Y CONFUSAS



**23.** A flashing red light means:

A



Slow down and proceed through intersection if safe.

B

Stop until the light changes to a flashing yellow light.

C



Stop and proceed when it is safe to do so.

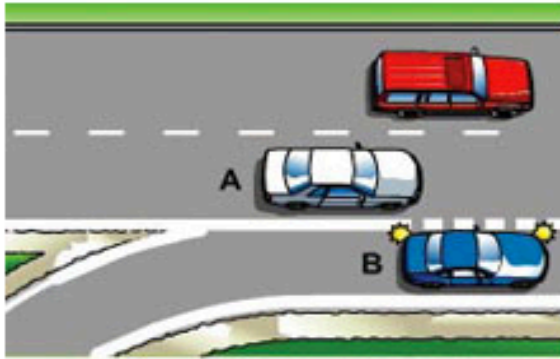
D



Stop until the light changes to a flashing green light.



# *PREGUNTAS DIFICILES Y CONFUSAS*



**2.** What should the driver of Car A do?

A



Speed up to get ahead of merging Car B.

B

Maintain speed.

C



Slow down to allow Car B safe entry.

D



Slow down, honk, and wave Car B in.

# *PREGUNTAS DIFICILES Y CONFUSAS*

**7.** In heavy traffic, how can you help a cyclist who may want to change lanes and turn left at an intersection?

A



Honk at the cyclist and wave them across.

B



Move into another lane so that other drivers can see their hand signals.

C

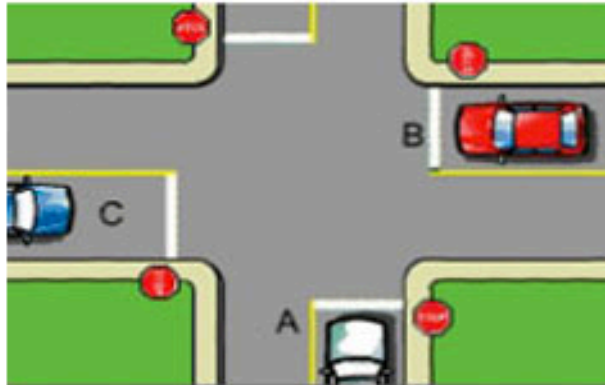
Maintain your lane position.

D



Leave extra room so the cyclist can safely change lanes.

# PREGUNTAS DIFICILES Y CONFUSAS



**13.** Car A and Car B arrived at the stop sign at the same time. Who should go first?

A



Car B.

B

Car A.

C



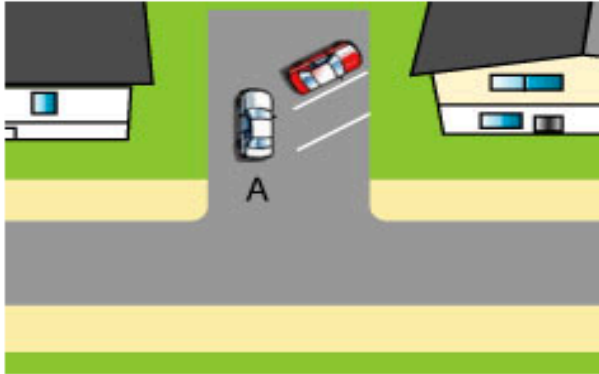
Both may move at the same time.

D



Both should wait for Car C to reach the intersection.

# PREGUNTAS DIFICILES Y CONFUSAS



- 16.** Before entering from a side street or alley must the driver of Car A stop before the sidewalk?

A

You must stop before the edge of the road.

B



If the intersection is clear you can just slow down and proceed.

C



You only need to stop if there are pedestrians present.

D



Yes, you must always stop before crossing a sidewalk out of an alleyway or side street.

# *PREGUNTAS DIFICILES Y CONFUSAS*



**18.** This sign means

A



obstruction - keep left

B

obstruction ahead, keep right

C



do not enter

D



danger; road ends ahead